

Mobile

Terminals and Solutions



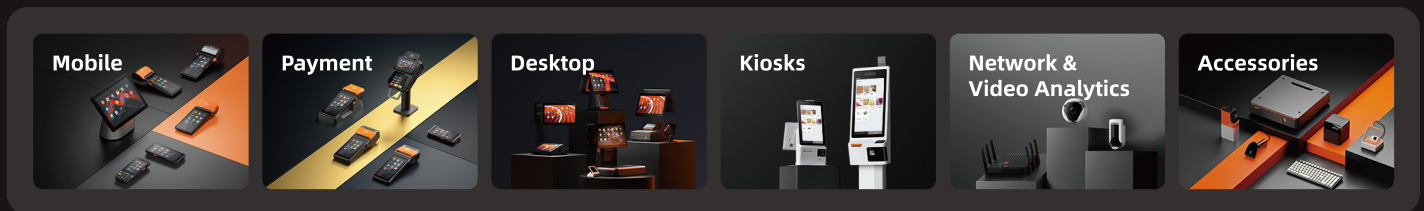
About SUNMI

SUNMI is leading the move to Android for business digitization solutions through attractive business IoT devices and End-to-End platform. We have established branches in 15 countries which radiate five core regions: Asia-Pacific, Europe, North America, Latin America, Middle East and Africa.

SUNMI BlOT Product Ecosystem

SUNMI Business IoT Products

SUNMI has rolled out a wide range of IoT products created for the retail, restaurant, financial, healthcare, and the public sector among other sectors.



SUNMI End-To-End Platform

SUNMI's value proposition is not only attractive devices. It is an End-To-End Platform and a full ecosystem. Manage your device fleet, keys and contents. And reduce your costs.

SUNMI OS (SUNMI Business Operating System)

SUNMI OS acts as a Hardware abstraction layer over the entire SUNMI device portfolio to enhance user and customer experience.

- Business UI
- OCR
- SDK
- Security Engine

SUNMI DMP (SUNMI Device Management Platform)

- MDM
- TMS
- Remote Assistance
- OTA
- App Distribution
- POS Steward

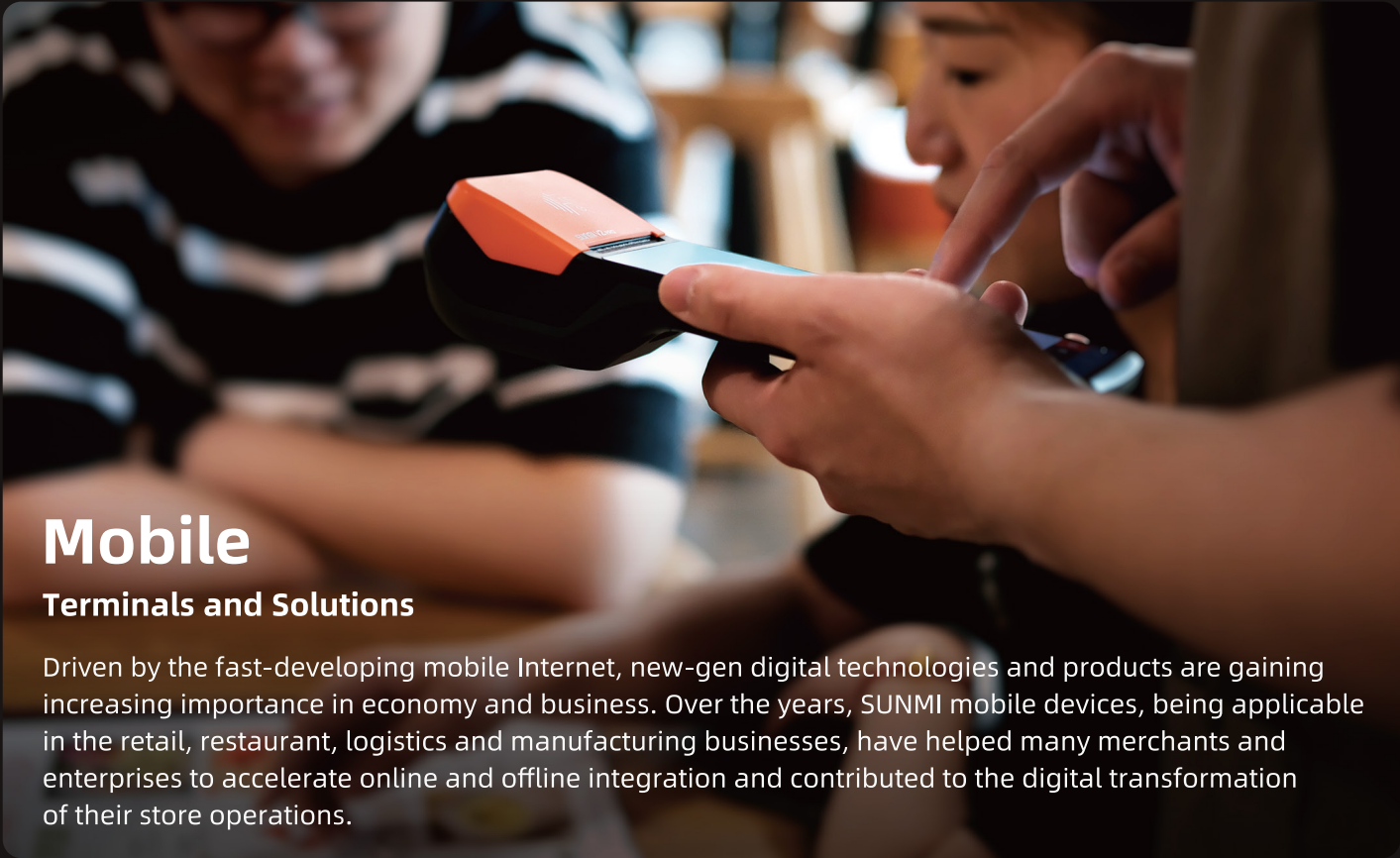
SUNMI APP STORE (SUNMI Advanced Application Management)

Secured, Flexible and Economical. Publish your apps and build your customized App Store.

Business Solutions for All Industries

Together with partners around the world, SUNMI creates digital solutions for businesses including retail, F&B, finance, logistics, public services, transportation, and more.





Mobile

Terminals and Solutions

Driven by the fast-developing mobile Internet, new-gen digital technologies and products are gaining increasing importance in economy and business. Over the years, SUNMI mobile devices, being applicable in the retail, restaurant, logistics and manufacturing businesses, have helped many merchants and enterprises to accelerate online and offline integration and contributed to the digital transformation of their store operations.

V Series

Smart Mobile Terminal

Products of V Series, the first handheld product line of SUNMI, integrate the functions of printing, barcode scanning, voice broadcast as well as touch screens, thus meeting merchants' needs in checkout, ordering, order taking and management.

- Food Delivery
- Queue Management
- Mobile Payment
- Mobile Ordering
- Receipt Printing
- Coupon Redemption
- OTA Top-Up
- Marketing Management

M Series

Smart Mobile Terminal

Big touch screen, easy operation, toughness, guaranteed performance... SUNMI enterprise tablets are designed to meet all your needs in doing business, and to drive your efficiency as well as customer experience.

- Mobile Ordering
- Mobile Payment
- Information-based Store Management
- Shopping Guide

L Series

Smart Mobile Terminal

SUNMI L Series are handheld computers which can read barcodes, RFID tags and contactless cards, with which you can enjoy an excellent mobility, and efficiently collect and manage a large amount of data.

- Warehouse Management
- Express & Logistics
- Item Management
- Mobile Police Service
- Mobile Nursing
- Production Management

SUNMI V2s PLUS Smart Mobile Terminal

Pushing the boundaries to help you achieve more.

Standard Version / Scanner & NFC Version / GMS Version

Three Printing Types Supported For Increased Flexibility

Support receipt, label and black mark printing* and 80mm printing sizes. Besides, the print speed is upgraded to 80mm/s MAX.

7.7V/3500mAh Large Capacity Removable Battery Duty Round The Clock, Effortlessly

A fully charged V2s PLUS can last for 14 days in standby mode, or work continuously for over 16 hours. Removable battery design brings longer run time and lasting productivity.

One Scan Engine To Support All Types Of Barcodes*

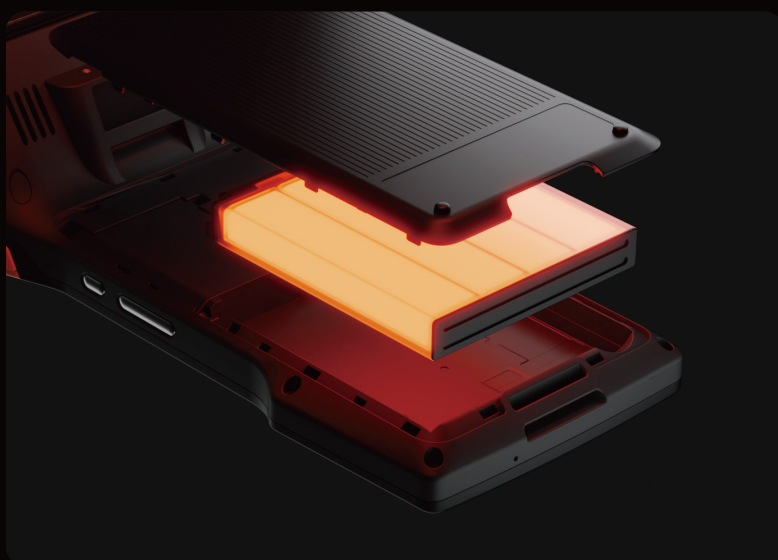
Read any 1D or 2D barcodes, even if scratched, folded or stained.

New Configuration For A Performance Boost

The leap in performance gives you the ability to smoothly switch between multi-apps and power up your business. The new SUNMI OS further enhanced device's security and integration.



* Black mark printing is available in the Scanner Version/GMS Version.
Scanning engine is available with the Scanner Version.





SUNMI V2s PLUS Tech Specs

General Configuration

Product Model T5F01	OS SUNMI OS (*based on Android 11)	Processor Cortex-A53, octa-core (4* 2.0GHz + 4* 1.5GHz)	Display 6.22"HD, 1520*720 IPS Capacitive multi-touch	Network 2G & 3G & 4G
Printer Built-in 80 thermal printer; Print speed: 80mm/s; Paper roll: φ 50mm; Receipt printing: 80mm, label printing (wide 60mm~80mm; High>20mm; Gap>2mm)	Wi-Fi 2.4G/5G IEEE 802.11 a/b/g/n/ac	Bluetooth Bluetooth 2.1/3.0/4.2, BLE	SIM Card Slot 2*Nano SIM	
MicroSD Card Slot 1*MicroSD	Speaker 1* 1.2W	GPS GPS/Glonass/Beidou/ Galileo	Port 1* Type-C OTG supported	Battery Removable, Lithium Polymer battery 7.7V/3500mAh (equal to 3.85V/7000mAh)
Power Adapter Input: AC 100~240V Output: DC 5V/2A	Protection 1.0m drop spec *Data from Sunmi Lab	Dimensions 237.2*100.91*63mm	Environment Operating temp: -10°C~50°C Storage temp: -20°C ~ 60°C	
Total Weight 535g	Base (Optional) Charging base			

	V2s PLUS Standard	V2s PLUS Scanner & NFC	V2s PLUS GMS
Memory	2GB RAM+16GB ROM	3GB RAM+32GB ROM	3GB RAM+32GB ROM
Scanner	N/A	Professional 2D barcode scan engine	N/A
NFC Reader	N/A	Type A & B card, Mifare card, Felica card; ISO/IEC 14443 and ISO 15693 compliant	Type A & B card, Mifare card, Felica card; ISO/IEC 14443 and ISO 15693 compliant
PSAM Card Slot	N/A	4* PSAM	4* PSAM
Camera	Rear:5MP Auto Focus with Flash LED, Support 1D/2D	Front: 2MP FF Rear: 13MP, Flash, AF 1D/2D barcode reading	Front: 2MP FF Rear: 13MP, Flash, AF 1D/2D barcode reading
Buttons	1* Power on/off button (lock screen button) 2* Volume (+/-) button	1* Power on/off button (lock screen button) 2* Volume (+/-) button 2* Scan button	1* Power on/off button (lock screen button) 2* Volume (+/-) button

SUNMI V2s Smart Mobile Terminal

Your digital partner to leap forward.

Standard / Label & NFC / Label & Scanner / GMS / Industry Tailored

Beyond Performance

As SUNMI's first smart terminal with SUNMI OS based on Android 11, V2s is equipped with an upgraded quad-core 2.0GHz CPU and 2G RAM +16G ROM memory and demonstrates enhanced operating speed*. The built-in 3500mAh removable battery enables a smooth and long-lasting experience.

*Compared to SUNMI V2.

Ticket And Label Printing

Dual printing for ticket and label printing, with SUNMI's label position auto-detection algorithm for a more accurate printing. A new movable fixator has been designed to enhance paper roll installation and make it more stable.

2D Scan Engine

Upgraded to a professional 2D scan engine, to read 1D/2D barcodes even if scratched, folded or stained.

Strengthened Protection

Rubber seals added to the edges of the paper bin, charging port, and earphone port help prevent water, oil and dirt damages.

Reinforced protection to resist 1.2m drop*.

*Data from SUNMI Lab



SUNMI V2s Tech Specs

General Configuration

Product Model T5940 T5941	OS SUNMI OS (*based on Android 11)	Processor Quad-Core 2.0GHz	Display 5.5"HD+, 1440*720 Capacitive multi-touch	Speaker 1*1W
Network 2G & 3G & 4G	Wi-Fi 2.4GHz/5GHz IEEE 802.11 a/b/g/n/ac	Bluetooth Blueooth 2.1/3.0/4.2, BLE	GPS GPS, AGPS	Battery Removable, Lithium Polymer battery 7.7V/3500mAh (equal to 3.85V/7000mAh)
Power Adapter Input: AC 100~240V Output: DC 5V/2A	Dimensions (L*W*H) 219.1*80*17.8 mm	Total Weight 417g (including battery) 300g (without battery)	Protection 1.2m *Data from SUNMI Lab	Environment Operating temp: -10~50°C Storage temp: -20~60°C
Cradle (Optional) Multi-function Base	Industry Tailored Module Built-in professional module card slot provides industry module customization services (please contact sales for details)			

Version	Standard	Label & NFC	Label & Scanner	GMS	Industry Tailored
Camera	Rear: 5.0MP Auto Focus with Flash LED Support 1D/2D	Front: 2MP FF Rear: 5.0MP, Flash, AF 1D/2D barcode scanning	Front: 2MP FF Rear: 5.0MP, Flash, AF 1D/2D barcode scanning	Front: 2MP FF (optional) Rear: 8.0MP, Flash, AF 1D/2D barcode scanning	Rear: 5.0MP Auto Focus with Flash LED Support 1D/2D
Memory	2GB RAM+16GB ROM	2GB RAM+16GB ROM	2GB RAM+16GB ROM	3GB RAM+32GB ROM	2GB RAM+16GB ROM
NFC Reader	N/A	Type A & B card, Mifare card, Felica card; ISO/IEC 14443 and ISO 15693 compliant	Type A & B card, Mifare card, Felica card; ISO/IEC 14443 and ISO 15693 compliant	Optional	Type A & B card, Mifare card, Felica card; ISO/IEC 14443 and ISO 15693 compliant
Scanner	N/A	N/A	2D barcode scan engine	Optional	Optional
PSAM Card Slot	N/A	2* PSAM	2* PSAM	Optional	1* PSAM
SIM & MicroSD Card Slot	2* Nano SIM 1* MicroSD	2* Nano SIM 1* MicroSD	2* Nano SIM 1* MicroSD	2* Nano SIM 1* MicroSD	1* Nano SIM 1* MicroSD
Printer	Built-in 58mm thermal printer Print speed: 80mm/s Paper roll: Φ40mm Support receipt printing	Built-in 58mm thermal printer Print speed: 80mm/s Paper roll: Φ40mm Support receipt & label printing; Label paper specs: 30-58mm wide, ≥20mm high, 2mm wide gap	Built-in 58mm thermal printer Print speed: 80mm/s Paper roll: Φ40mm Support receipt & label printing; Label paper specs: 30-58mm wide, ≥20mm high, 2mm wide gap	Built-in 58mm thermal printer Print speed: 80mm/s Paper roll: Φ40mm Support receipt printing Support label printing (optional)	Built-in 58mm thermal printer Print speed: 80mm/s Paper roll: Φ40mm Support label printing (optional)
Buttons	1 * Power Button 2* Volume (+/-) Button	1 * Power Button 2* Volume (+/-) Button	1 * Power Button 2* Volume (+/-) Button Scan Left/Right	1 * Power Button 2* Volume (+/-) Button	1 * Power Button 2* Volume (+/-) Button
Ports	1* Type-C, OTG supported 1* Audio Jack	1* Type-C, OTG supported 1* Audio Jack	1* Type-C, OTG supported 1* Audio Jack	1* Type-C, OTG supported 1* Audio Jack	1* Type-C, OTG supported

SUNMI V2 PRO Smart Mobile Terminal*

Bezel-less, two printing configuration options.



Excellent Design And Practicality

The 5.99" HD+ screen, 13mm thickness (the thinnest part) and double-shot molding all contribute to its excellent design and toughness.

Flexible Printing

Receipt and label printing configuration* options are available.

Surefire Barcode Scanning

With a 2D barcode scan engine*, you can quickly scan barcodes from all directions even when they are damaged, scratched, or contaminated.

Optional Accessory



SUNMI V2 PRO Cradle

A charging base & USB expander specially designed for SUNMI V2 PRO.



*1. Two versions available: SUNMI V2 PRO and SUNMI V2 PRO Label Version;

2. SUNMI V2 PRO comes with a 1D barcode scan engine for product barcode scanning, and a Seiko (58mm) thermal printer for receipt printing;

3. SUNMI V2 PRO Label Version comes with a 2D barcode scan engine for more professional product barcode scanning, and a label printer for label and receipt printing.

V2 PRO

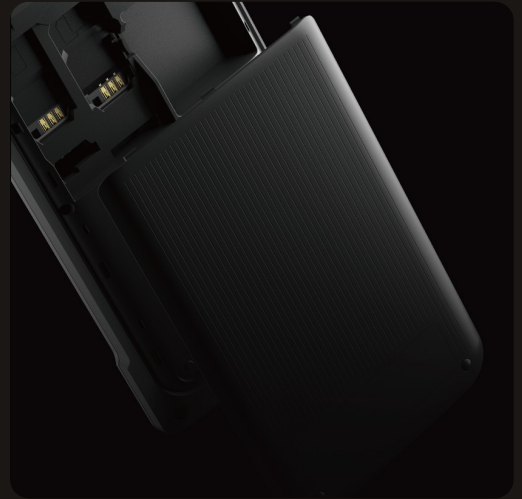
1D Barcode Scan Engine
58mm Thermal Printer
(Receipt)



V2 PRO Label Version

2D Barcode Scan Engine
58mm Thermal Printer
(Receipt/Label)





SUNMI V2 PRO Tech Specs

Product Model T5921	OS SUNMI OS (*based on Android 7.1)	Processor Cortex-A53 quad-core, 1.4GHz	Memory 2GB RAM + 16GB ROM	Display 5.99"HD+, 1440*720 Capacitive multi-touch
Camera Rear: 5MP, Flash, AF 1D/2D barcode reading	Printer Standard config: Built-in 58mm thermal printer Print speed: 70mm/s Paper roll: φ 40mm Label Version: Built-in 58mm thermal printer Print speed (label/receipt): 70mm/s; paper roll: φ 40mm Label paper specs: 50~58mm wide, ≥20mm high, 2mm wide gap		NFC Reader Type A & B card Mifare card, FeliCa card ISO/IEC 14443 ISO 15693 compliant	
Scanner Standard version: 1D barcode scan engine Label Version: 2D barcode scan engine	Speaker 1* 1W	PSAM Card Slot 1* PSAM	SIM Card Slot 1* MINI SIM	
vSIM Supports vSIM	Network 2G & 3G & 4G	Wi-Fi 2.4GHz/5GHz IEEE 802.11a/b/g/n	Bluetooth Bluetooth 2.1/3.0/4.2 BLE	GPS AGPS GPS, Glonass, Beidou
Buttons 1* Power on/off button (lock screen button) 2* Volume (+/-) button	Port 1* Type-C OTG supported	Battery Non-removable LiPo battery 7.6V/2580mAh	Power Adapter Input: AC100~240V Output: DC 5V/2A	Dimensions (L*W*H) 215.2*83*17mm
Total Weight 356g	Environment Operating temp: -10~50°C Storage temp: -20~60°C	Cradle (Optional) USB Cradle, supports charging and USB extension		

SUNMI V2 Smart Mobile Terminal

Large paper capacity. Make your work at peak hours a breeze.

Big Paper Capacity

Designed for a 50mm OD paper roll, its inbuilt printer can save your time on reloading and cost on paper rolls.

High-speed Printing

The 58mm Seiko thermal printer can print smoothly and 16.7% faster.

High-volume Speaker

With a 1W speaker, you won't miss any order, payment or queue number in noisy environments.

Optional Accessory



SUNMI V2 Charging Base
Specially designed for SUNMI V2.



SUNMI V2 Tech Specs

Product Model T5930	OS SUNMI OS (*based on Android 7.1)	Processor Cortex-A53, quad-core 1.3GHz or 1.5GHz	Memory 1GB RAM + 8GB ROM 2GB RAM + 16GB ROM (optional)	Display 5.45" HD+, 1440*720 Capacitive multitouch
Camera Rear: 5MP, Flash, AF 1D/2D barcode reading	Printer Built-in 58mm thermal printer Print speed: 70mm/s Paper roll: φ 50mm	Speaker 1*1W	SIM Card Slot 1* NANO SIM	vSIM Supports vSIM
Network 2G & 3G & 4G	Wi-Fi 2.4GHz/5GHz IEEE 802.11 a/b/g/n	Bluetooth Bluetooth 2.1/3.0/4.0 BLE	GPS AGPS GPS, Glonass, Beidou	Buttons 1* Power on/off button (lock screen button) 2* Volume (+/-) button
Port 1* Type-C OTG supported	Battery Non-removable LiPo battery 7.6V/2580mAh	Power Adapter Input: AC 100~240V Output: DC 5V/2A	Dimensions (L*W*H) 219.1*80*17.8mm	Total Weight 364g
Environment Operating temp: -10~50°C Storage temp: -20~60°C	Cradle (Optional) A charging cradle			

SUNMI L2Ks Smart Mobile Terminal New

Define a new classic for indoor applications and beyond.

Lightweight

Designed for one-handed operations, L2Ks is light and ergonomic, to boost your efficiency anywhere.

Better Protection Ratings

To withstand everyday usage, L2Ks is 1.8m drop resistant, IP68 rated and has passed 3000 0.5m tumble tests.

ATL Large-capacity Battery, Safe And Durable

Equipped with a ATL battery cell, L2Ks features 800 charge cycles. The removable 5000mAh large-capacity battery can stand for up to 2 shifts. A new auxiliary battery helps eliminating downtime when changing the main battery.

Professional Scan Engine

High speed — 10 scans/sec; long reach — up to one meter read distance; accurate — read just the barcode the laser aimer positioned; reliable — quickly read hard-to-read barcodes including scratched, stained, crinkled barcodes or DPM barcodes, etc.

User-centric Design

The optimized button design and scan angle, accidental touch protection for the power button, and user-facing speakers all contribute to a better user experience.



SUNMI L2Ks Tech Specs

Product Model T8A10	OS SUNMI OS (*based on Android 11)	Processor Octa-core 2.0GHz (4*2.0GHz+4*1.5GHz)	Memory 4GB RAM+32GB ROM 2GB RAM+16GB ROM (Not supported for GMS Version)	Display 4" WVGA, 800*480 Capacitive multi-touch
Camera Front: 5MP FF Rear: 8MP AF/ 13MP AF + Flash 1D/2D barcode scanning	NFC Reader Type A & B card, Mifare card, Felica card; ISO/IEC 14443 and ISO 15693 compliant	Speaker 2* 1W	PSAM Card Slot 1*PSAM (optional)	SIM Card Slot 1* NANO SIM+1* SIM+ 1* MicroSD (TF)
vSIM Supports vSIM (Not supported for GMS version)	Network 2G & 3G & 4G	Wi-Fi 2.4GHz/5GHz IEEE 802.11 ac/a/b/g/n/d/ e/h/i/j/k/r/v/w	Bluetooth Bluetooth 5.0 BLE	GPS AGPS GPS/Glonass/Beidou/ Galileo
Sensors Light sensor, proximity sensor, gravity sensor, gyroscope, hall sensor	Buttons 1* Power on/off button (lock screen button) 1* Custom button 2* Scan button (left/right) 23* Physical button	Microphones 2* MIC	Ports 1*Type-C, support OTG 2*pogo pin at the bottom for charging 8* pogo pin on the back for accessories	Battery Removable LiPo battery 3.85V/5000mAh; Non-removable small battery 60mAh (optional)
Power Adapter Input: AC 100~240V Output: DC 9V/2A, 5V/2A	Dimensions (L*W*H) 160*64.5*14.4mm (thinnest)	Total Weight 243.5g	Protection IP65/IP68, 1.8m drop spec *Data from SUNMI Lab	Environment Operating temperature: -20°C~55°C Storage temperature: -40°C~70°C
Scanner Professional scan engine (*optional Zebra& Honeywell)	Accessories (optional) Trigger handle, charging base, four-slot battery charger, hand strap, screen tempered glass			

SUNMI L2H Smart Mobile Terminal New

Powerful PDA, higher, stronger and safer.

Octa-core Processor And SUNMI OS

With an octa-core processor inside and the 11nm manufacturing process adopted, L2H has been greatly improved in performance. The new SUNMI OS also brings you better design, smoothness and security.

Inbuilt Dual-band GPS And Barometer

Minimized position deviation. Locate your staff more accurately to a specific floor with the horizontal and vertical positioning system.

Barcode Reading And OCR*

In addition to reading 1D/2D barcodes (even if scratched, folded or stained), L2H also can recognize printed text with its OCR-enabled scanner.

*SUNMI provides you OCR SDK interfaces for quick and efficient OCR realization.

More Rugged And Durable

Featuring IP67 and 1.5m drop spec, L2H can stand harsh work environments with no compromise in performance.

Fingerprint Lock

Newly added fingerprint lock to protect your data.

*SUNMI provides you OCR SDK interfaces for quick and efficient OCR realization.



SUNMI L2H Tech Specs

Product Model T8911	OS SUNMI OS (*based on Android 11)	Processor Kyro-260 Octa-core (Quad Core, 2.0GHz+Quad Core, 1.8GHz)	Memory 4GB RAM+64GB ROM 6GB RAM+128GB ROM (optional)	Display 5.5" HD, 1440x720 Capacitive multitouch
Camera Front: 5MP FF Rear: 16MP AF Rear camera scanning 1D/2D barcode reading	NFC Reader Type A & B card, Mifare card, Felica card; ISO/IEC 14443 and ISO 15693 compliant	Scanner Professional scan engine (*optional Zebra & Honeywell)	Speaker 1* 1W	PSAM Card Slot 1* PSAM
Fingerprint Sensor Capacitive	vSIM Supports vSIM	Network 2G & 3G & 4G	Wi-Fi 2.4G/5G IEEE 802.11 a/b/g/n/ac/ax ready	Bluetooth Bluetooth 5.1 BLE
SIM Card Slot 1* Nano SIM 1* SIM	TF Card Slot 1* TF	GPS AGPS GPS/Glonass/Beidou/Galileo Support dual band L1/L5	Power Adapter Input: AC 100~240V Output: 5V/3A, 9V/2A	MIC 2* MIC
Buttons 1* Power (lock screen) button 2* Scan button 2* Volume (+/-) button 1* Custom button	Ports 1*Type-c, support OTG 2*pogo pin at the bottom for charging 8* pogo pin on the back for accessories	Battery Removable polymer lithium battery, 3.8V/5000mAh Non-removable polymer lithium battery, 3.7V/60mAh	Sensor G-Sensor Proximity sensor Light sensor Gyroscope E-compass Barometer	Dimensions (L*W*H) 154.4*74.6*17.1 mm
Total Weight 245g	Protection IP67 1.5m drop spec *Certified by a third-party labs	Environment Operating temperature: -20°C~55°C Storage temperature: -40°C~70°C	Accessories (optional) Trigger handle,UHF handle,Charging base, 4-slot battery charger,Hand strap Screen tempered glass	

SUNMI L2s Smart Mobile Terminal

A new generation of enterprise PDA,
built to digitize your frontline operations.

L2s Scanner / L2s Standard / L2s RFID

Upgraded Protection

The 5.5" HD screen matched with Corning Gorilla Glass enhances the resistance to drop and scratch. With the IP65 and reinforcement design, SUNMI L2s survives the 1.5-meter drop test.

ATL 5000mAh Large Capacity Battery With High Stability

SUNMI L2s uses battery from ATL, the world's leading manufacturer of lithium batteries, whose charging cycle is up to 800 cycles, ensuring the reliability of battery. With the built-in intelligent chip, the battery can avoid overcharging to extend battery life.

Professional 2D Scan Engines

1D/2D barcodes can be recognized even if they are scratched, folded or stained. Three scan engines are available (Zebra/Honeywell)

UHF-RFID Labels Identification

SUNMI L2s can identify product labels in group efficiently up to 50cm*, reducing the chance of manual operation errors.
(*Only the RFID version supports it, and the actual distance depends on the label size)



Optional Accessories

Charging Base

PDA and battery can be charged simultaneously for high-frequency usage.

UHF Handle

With UHF handle, RFID labels can be identified in groups accurately.

4-slot Battery Charger

Support charging up to 4 batteries simultaneously and intelligent battery management.

Hand Strap

SUNMI L2s is convenient for daily mobile use with hand strap.

Scanner Handle

With scanner handle, L2s can be used in high-intensity barcodes scanning scenarios such as inventory, manufacturing, and logistics.



SUNMI L2s Tech Specs

General Configuration

Product Model T8910	OS SUNMI OS (*based on Android 9.0)	Processor Cortex-A53, quad-core 1.8GHz/2.0GHz	Display 5.5" HD, 1440x720 Capacitive multitouch	Speaker Two microphones Vibrate alert Speaker
GPS AGPS GPS/Glonass/Beidou/ Galileo	Network 2G & 3G & 4G	Wi-Fi 2.4G/5G,Support IEEE 802.11 a/b/g/n/ac	Bluetooth Bluetooth 5.0 BLE	Battery Removable LiPo battery 3.8V/5000mAh
Power Adapter Input: AC 100~240V Output: DC 5V/2A	Dimensions (L*W*H) 154.4*74.6*17.1mm	Environment Working temperature: -20°C~55°C, Storage temperature: -40°C~70°C	Protection IP65, 1.5m drop spec *Certified by a third-party lab	Accessories (Optional) Charging base Scanner handle UHF handle Hand strap 4-slot battery charger Screen tempered film

	L2s Scanner	L2s Standard	L2s RFID
Memory	3GB RAM + 32GB ROM	2GB RAM + 16GB ROM	3GB RAM + 32GB ROM
Scanner	Professional scan engine (*optional Zebra/Honeywell)	N/A	Professional scan engine (*optional Zebra/Honeywell)
Card Slot	1*Nano SIM, 2*PSAM, 1*MicroSD (TF)	2*SIM, 1*PSAM, 1*MicroSD (TF)	1*Nano SIM, 2*PSAM, 1*MicroSD (TF)
Camera	Front: 2MP FF Rear: 13MP AF Rear camera scanning, 1D/2D barcode reading	Front: 2MP FF Rear: 5MP AF Rear camera scanning, 1D/2D barcode reading	Front: 2MP FF Rear: 13MP AF Rear camera scanning, 1D/2D barcode reading
Buttons	1* Power (lock screen) button 2* Scan button 2* Volume (+/-) button 1* Custom button	1* Power (lock screen) button 2* Volume (+/-) button 1* Custom button	1* Power (lock screen) button 2* Scan button 2* Volume (+/-) button 1* Custom button
RFID (built-in UHF)	N/A	N/A	0.5M
Sensors	G-Sensor Proximity sensor Light sensor Gyroscope E-compass	G-Sensor Proximity sensor Light sensor E-compass	G-Sensor Proximity sensor Light sensor Gyroscope E-compass
Ports	1* Type-C, OTG supported 2* POGO Pin in bottom for charging 8* POGO Pin in back for accessories	1* Type-C, OTG supported 2* POGO Pin in bottom for charging	1* Type-C, OTG supported 2* POGO Pin in bottom for charging 8* POGO Pin in back for accessories
NFC Reader	Type A & B card Mifare card, Felica card ISO/IEC 14443 and ISO 15693 compliant	N/A	Type A & B card Mifare card, Felica card ISO/IEC 14443 and ISO 15693 compliant
Total Weight	245g	231g	255g

SUNMI L2s PRO Smart Mobile Terminal New

Time to PRO your frontline operations.

Fast and Seamless Barcode Scanning

Read scratched, stained, crinkled barcodes up to 1m away even on the high shelves in your warehouse.

Triple Protection

L2s PRO is specifically designed to sustain rough environments: IP68 rating, 1.5 drop rate and up to 1.2m deep water for 30 min.

Long Battery Life Enableds Stable Performance

The removable ATL 5000mAh battery features long run time, making L2s PRO a good choice for battery intensive usage. With 18W quick charge, it can be fully charged in 3 hours, further reducing your operations downtime.



Multiple Accessories

Charging Base

PDA and battery can be charged simultaneously.



Four-slot Battery Charger

Support charging up to 4 batteries simultaneously, with intelligent battery management for longer life cycle.



Trigger Handle

Further improve your barcode scanning efficiency especially for warehousing, manufacturing and logistics sectors.



UHF Trigger Handle*

Read multiple RFID tags at once. Fastest read rate for RFID tags >200 tags/sec. Longest read range for an RFID tag >10M.

*The read rate and range depend on actual environments.



Enhanced Performance

Octa-core 2.0GHz processor

Multiple memory config options:
3+32GB, 4+64GB, 6+128GB



Strong Protection

IP68².
1.5m drop spec³.
Corning Gorilla Glass
touchscreen for enhanced drop
and scratch resistance.



NFC

High Volume



SUNMI OS¹

Designed for business scenarios.
Smooth, secure and reliable.

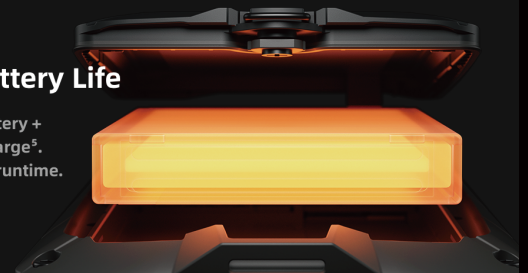
Fast and Accurate Reading

Read distance up to one meter⁴.
Read scratched or crinkled barcodes.
Read barcodes under strong light.
OCR.



Long Battery Life

5000mAh battery +
18W quick charge⁵.
Long battery runtime.



SUNMI L2s PRO Tech Specs

Product Model

T8920

OS

SUNMI OS
(*based on Android 12)
GMS certified

Processor

Cortex-A53, octa-core
(*2.0GHz+4*1.5GHz)

Memory

3GB RAM+32GB ROM
4GB RAM+64GB ROM
6GB RAM+128GB ROM
(optional)

Display

5.5" HD+, 1440*720, IPS
Capacitive multi-touch

Camera

Front: 2MP FF
Rear: 13MP, AF, Flash,
support 1D/2D
barcode scanning

NFC Reader

Supports TypeA&B card,
Mifare card, Felica card,
ISO/IEC 14443 and
ISO15693 compliant

Scanner

1D/2D barcode scan
engine

Speaker

1* 1.5W

Card Slot

1* PSAM
1* NANO SIM + 1* MINI SIM
1* MicroSD (TF) up to 256G

Network

2G & 3G & 4G

Wi-Fi

2.4GHz/5GHz
IEEE 802.11 a/b/g/n/ac

Bluetooth

Bluetooth 5.0
BLE

GPS

AGPS
GPS, Glonass, Beidou,
Galileo

MIC

2* MIC

Buttons

1* Power on/off button
1* Custom button
2* Volume (+/-) button
2* Scan button(left/right)

Ports

1* Audio jack
1* Type-C USB OTG supported
2* Pogo pin at the bottom for charging
8* Pogo pin on the back for accessories

Sensor

AGPS, GPS, Glonass
Beidou, Galileo

Battery

Removable polymer lithium
battery, 3.8V/5000mAh

Power Adapter

Input: AC 110-240V
Output: 9V 2A / 5V 2A
*Vary from different versions

Dimensions (L*W*H)

154.4*74.6*17.1mm

Total Weight

250g

Protection Level

IP68
1.5m drop test
*Data from Third-party Lab

Environment

Operating temperature:
-20°C~55°C
Storage temperature:
-40°C~70°C

Accessories

Scanner handle, UHF handle, Charging base
4-slot battery charger, Hand strap, Screen tempered glass

1. Based on Android 12, SUNMI OS is customized for business scenarios.

2-4. Certified by third-party authorities.

5. Quick charging functions optional.

6. The usable memory may be less than the installed memory.

7. All specifications are subject to change without (prior) notice.

SUNMI M2 MAX Smart Mobile Terminal

A rugged tablet built to improve your store operations.

Rugged

Featuring IP65 and 1m drop, M2 MAX can stand up challenges in working environments; The Corning Gorilla Glass used in its 10.1" HD screen is more resistant to scratches and abrasions during use.

Smooth Operations

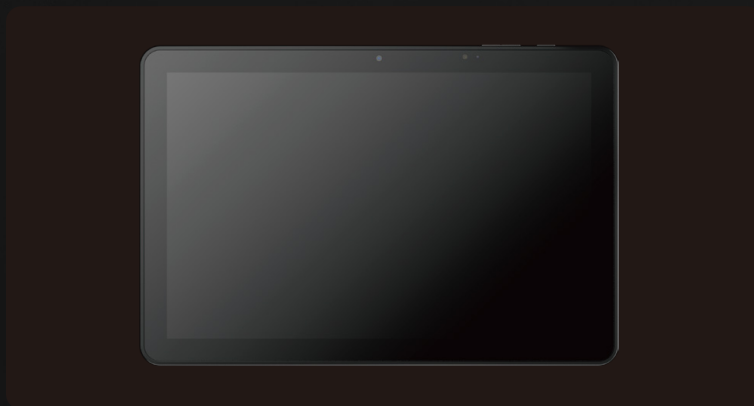
Equipped with a high-performance octa-core processor and large memory, it can run multiple tasks smoothly.

Long Run Time

With a built-in 8360mAh battery, it can work 12 hours continuously or stand by for 20 days.

Highly Flexible

Optional accessories for M2 MAX include hand strap and cradle, only to meet your needs in more business scenarios.



*Scanner Version: The scanner is non-removable.



SUNMI M2 MAX Tech Specs

Product Model Config 1: TF700 (Wi-Fi Ver.) Config 2: TF701 (4G Ver.)	OS SUNMI OS (*based on Android 9.0)	Processor Kryo-260 octa-core, 2.2GHz	Memory Config 1: 3GB RAM + 32GB ROM Config 2: 4GB RAM + 64GB ROM	Display 10.1" FHD, 1920*1200 Capacitive multi-touch
Camera Front: 5MP FF Rear: 13MP, Flash, AF 1D/2D barcode reading	NFC Reader Type A & B card, Mifare card FeliCa card. ISO/IEC 14443, ISO15693 standards compliant	Speaker 2* 1W	PSAM Card Slot 1* PSAM	vSIM Supports vSIM (Config 2)
SIM Card Slot 1*MicroSD (TF) (Config 1) 2* NANO SIM OR 1* NANO SIM+1* MicroSD (TF) (Config 2)	Network 2G & 3G & 4G	Wi-Fi 2.4GHz/5GHz IEEE 802.11a/b/g/n/ac	Bluetooth Bluetooth 5.0 BLE	
GPS AGPS GPS/Glonass/Beidou (Config 2)	Sensors Gravity sensor, light sensor, compass sensor, hall sensor.	Buttons 1* Power on/off button (lock screen button) 2* Volume (+/-) button	MIC 2* MIC	Ports 1* Type-C, OTG supported 1* Audio Jack, supports POGO Pin
Battery Nonremovable LiPo battery 3.85V/8360mAh	Power Adapter Input: AC 100~240V Output: DC 5V/2A	Dimensions (L*W*H) 245.6*164.4*9.9mm (thinnest)	Weight Standard Version: 673g Scanner Version: 735g	Protection Ratings IP65 1.0m drop spec *Data from SUNMI Lab.
Environment Operating temp.: -20°C~55°C Storage temp.: -40°C ~ 70°C	Accessories hand strap charging and extendable cradle (optional) protective case (optional)	Scanner Professional 2D scan engine (*Only supported by scanner version)		

SUNMI M2 Smart Mobile Terminal

Durable, portable, efficient, and long-lasting.

Ultraportable

5" touch screen, 172g net weight, and the lightweight slim design give you a burdenless holding for long-time use.

Long Battery Run Time

With a built-in 3.8V 3000mAh battery, it can work for 16 hours continuously, and the standby time can be up to 10 days.

Professional Protections

Double injection molding adopted and 1m drop spec.

Optional Accessory



SUNMI M2 Charging Base

A charging base specially designed for SUNMI M2.



SUNMI M2

Product Model

Config 1: T7820
Config 2: T7821

OS

SUNMI OS
(*based on Android 7.1)

Processor

Quad-core 1.4GHz

Memory

1GB RAM + 8GB ROM

Display

5" HD, 1280*720 IPS

Camera

0.3M, FF
For 1D/2D mobile
payment barcodes scanning

Internet

4G (optional)

Wi-Fi

2.4GHz/5GHz
IEEE 802.11 a/b/g/n

Bluetooth

Bluetooth 2.1/3.0/4.2, BLE

SIM Card Slot

1* SIM (1.8V/3.0V)
(Optional)

Speaker

1W

GPS

GPS, AGPS

Port

1* Type-C USB

Battery

Non-removable LiPo battery
3.8V/3000mAh

Buttons

1* Power on/off button
(lock screen button)
2* Volume (+/-) Button
(can be set as scan button
using software)

Power Adapter

Input: AC 100~240V/1.5V
Output: DC 24V/1.5A

Dimensions (L*W*H)

144.41*73.2*13.7mm

Total Weight

172g (with battery)

Base

Charging base

Environment

Operating temp: 0°C~40°C
Storage temp: -10°C~50°C

Better Together

SUNMI provides integrated IoT solutions to make your business digital, interconnected and smart. Find what will further grow your business or even generate more business opportunities.

Smart Desktop Terminals

Manage your transactions with only one small-footprint desktop terminal.



SUNMI T2s Smart Desktop Terminal

Pursuit of excellence, performance breakthrough.



SUNMI D2s Smart Desktop Terminal

Compact in size, convenient in checkout.

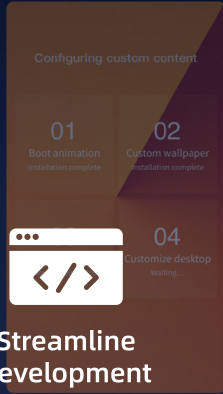
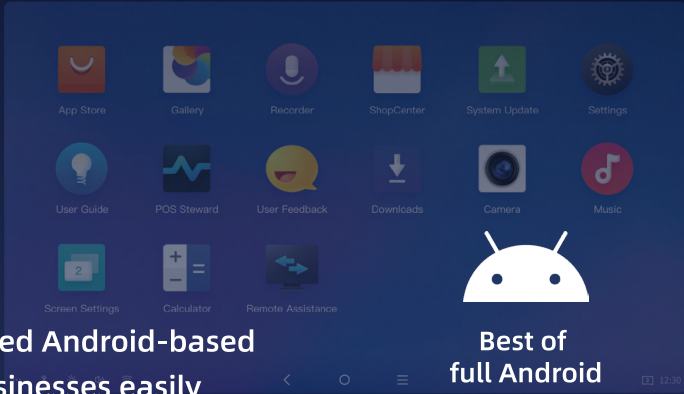
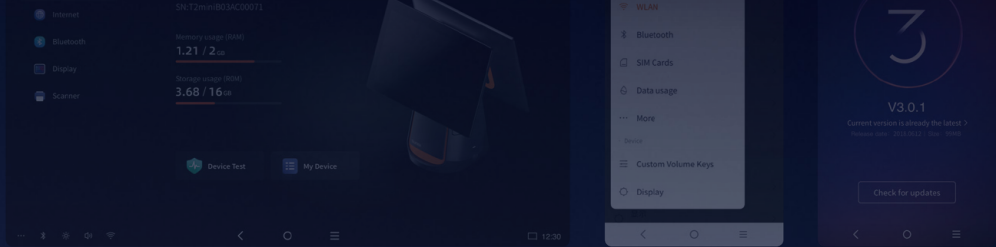
Printers

Automatically take online orders without relying on a cellphone or computer.



SUNMI 80 Kitchen Cloud Printer

Automatic online order taking and printing.
A better choice for restaurant kitchens.

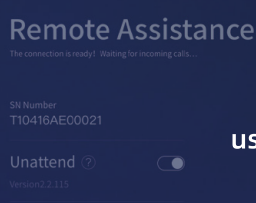


SUNMI OS

SUNMI OS is an optimized and enhanced Android-based operating system designed to help businesses easily embrace digital transformation.

Best of full Android

Streamline development



Enhance user experience



Leverage SUNMI DMP



Easy Deployment & Management

SUNMI OS works seamlessly with SUNMI DMP to deploy and manage device fleets, thus to reduce your operational costs and overcome management challenges.

Security Services

All-encompassing and attack-robust.



Security Engine

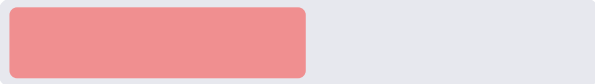
- Secure Boot
- App Sandbox
- TEE
- Unique Firmware ID
- Access Control
- Secure Storage
- Online Firmware Upgrade
- Installation Signature Verification
- Secure Network
- Firmware Validation
- Security Patch
- Secure Enrollment
- Anti Firmware Rollback
- Random MAC Address
- Anti-tamper Identifier
- ...

For more info, please visit www.sunmi.com/sunmi-os/

Boost efficiency and productivity in your day-to-day operations: ordering, checkout, stock management, loyalty programs, or beyond.

Memory Optimization

Keep background apps where they should be.



38.5% more memory available

*V2 (1GB+8GB) data. Data may vary depending on device models.

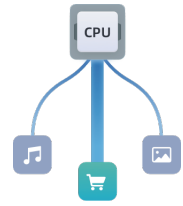
CPU Allocation

Prioritized resource allocation, better user experience.

Average 50% shorter hot startup time.

*T2s (3GB+32GB) data.

Data may vary depending on device models.



File System

Run your devices smoothly for a longer time.



One Set of Hardware APIs Makes It Easy to Onboard



Scanner Service

Configure once, deploy to all. Designed for multiple scenarios.



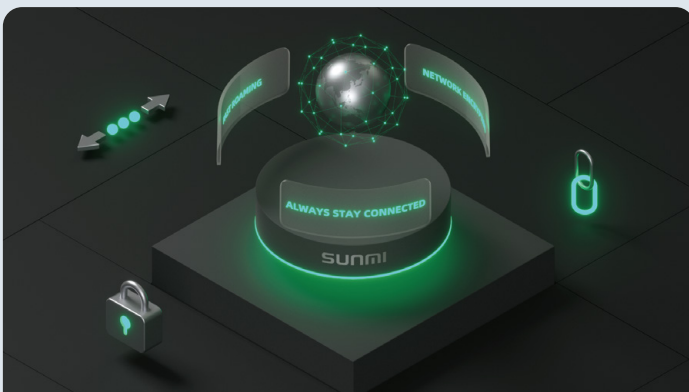
Printer Service

Configure once, deploy to all. Scalable vector fonts. Monitorable printing results.



UHF-RFID Tags Reading

Read multiple tags to speed up your stock taking work (Read distance depends on tag size.)



Network Optimized

Always stay connected with multimode network connection. Fast roaming for improved online experience. Data security ensured by network encryption.

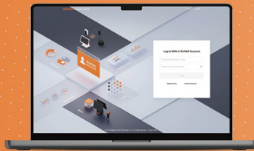


Battery Optimization

Smart chip inside to enhance battery safety. Learning your habits and last longer. Multiple charging options available.

SUNMI DMP

SUNMI Device Management Platform



MDM
(SaaS)



TMS
(Private Deployment)



Features



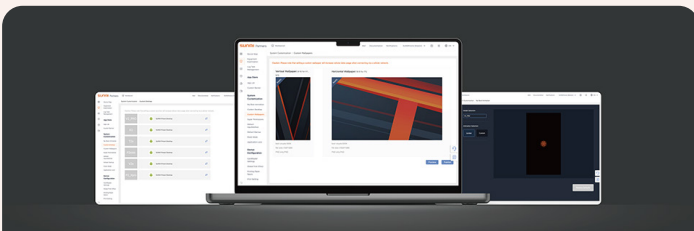
Remote Assistance

Reimagine your aftersales service: quickly find and solve device problems with no geographic restrictions. Compatible with all types of SUNMI devices.



Private Cloud Deployment

Deployed to customer specified servers, TMS is a device management platform built for the finance, logistics and healthcare industries, and many more.



Brand Customization

Release customized boot animations, wallpapers and home screen apps to your devices to create your brand voice.



App Distribution

Make your apps quickly available to millions of devices with this top-notch app store for business.

Global network topology. Quick, stable and secure.



Dynamic Acceleration via CDN

Provide easy network access worldwide, including some remote areas like South Africa and the Middle East, with our dynamic acceleration via CDN and edge node optimization.



Dynamic Capacity Expansion

We adopt a scalable architecture to support dynamic capacity expansion, supporting tens of millions active devices everyday.



Classified Information Protection

Level 2 information protection to secure important information, resources and systems.



SUNMI App Store

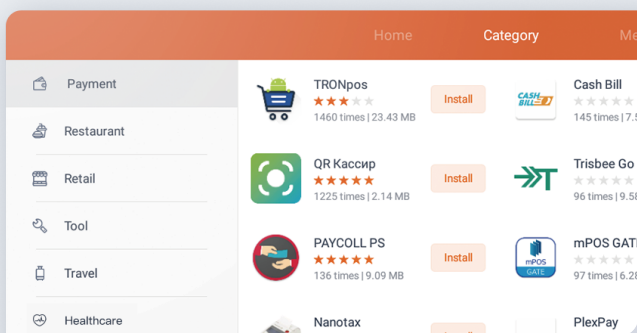
Secured, Flexible and Economical. Publish your apps and build your customized App Store.



Access to a Wide Range of Industry Based Apps

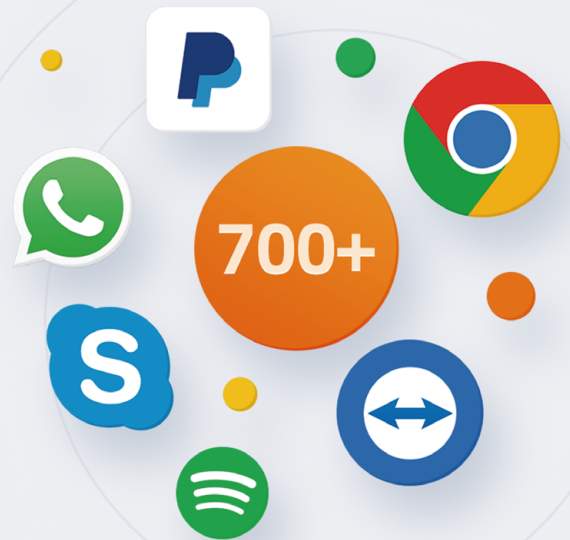
Developers around the world have worked hard to provide Apps needed in doing every business. Up to now, 11 industries including retail, restaurant and payment have been covered.

2700+ Retail	2500+ Restaurant	2200+ Payment	660+ Life Services
470+ Transportation	440+ Tourism	140+ Healthcare	



Choose Your Public Apps

We've maintained over 700 public apps in the app store, including Chrome, TeamViewer, WeChat, etc. for businesses to choose from.



32,000+
Developers

18,000+
Apps

100,000,000+
Downloads

*SUNMI reserves the right to interpret the data.

SUNMI Care

Constantly adapts and improves the process that leads to good experience.



SUNMI Care STANDARD

SUNMI Care Standard Standard Warranty Service

Country level warranty service provided by service partners based on the standard warranty terms signed in sales agreements.

SUNMI Care PARTNER

SUNMI Care Partner Channel Partner Service

Empower channel partners to service end users in own channel. Sign service authorization agreements, provide service spare parts, professional support for maintenance training.

SUNMI Care PRO

SUNMI Care Pro KA Professional Service

Various industries across the country. Sign long-term service agreements and services provided by dedicated technical support teams.

*Terms are subject to the signed agreement.

	SUNMI Care Standard	SUNMI Care Partner	SUNMI Care PRO
Standard Service			
Warranty Service	√	√	√
Standard Warranty	1Yr	1Yr	1Yr
Repair Centre Return	√	√	√
Repair TAT	N/A	7 Days (Received Confirmed)	5 Days (Received Confirmed)
Specialist Technical Support	N/A	5x8 Regular working Hours	7x10 MON to FRI, SAT, SUN
Web Portal Support	7x24	7x24	7x24
Professional Service			
Dedicated Service Coordinator	N/A	Optional	√
Web Portal Support	N/A	Same Day	2 Hours
SUNMI PTN Professional Support	N/A	√	√
Device Binding Management	N/A	√	√
Device Data Report Subscription	Optional	Optional	√
Repair Report Subscription	N/A	Optional	√
Software Development Support	N/A	√	√
App Store Management	Optional	√	√
SUNMI OS OTA Service	Optional	√	√
MDM Standard Remote Service	√	√	√
MDM Premium Remote Diagnostics	Optional	Optional	Optional

Global Service Network

SUNMI has 70+ service partners covering 40+ countries in five core regions.



For more info, please visit www.sunmi.com/sunmi-care/

Grow a stronger business with SUNMI and our partners.



Glovo: A well-known food platform in Spain.

"The number of restaurants is the foundation of our success, and affordable SUNMI products allow us to expand quickly. The product quality and reliability allow us smooth operations and deployments. Our restaurant partners also have praised the simplicity and performance of the solution."

— Glovo



EASI: The most popular food delivery platform in Australia, which has served over 20,000 restaurants and more than 100 million users.

"The takeout and delivery sales soar during the pandemic and we have served over 20,000 restaurants and now is rapidly expanding our international business, among which SUNMI's V series has helped us a lot."

— EASI



HungryPanda: A food and grocery delivery platform which was established in the UK, 2016. Now its business has covered more than 60 cities around the world.

"HungryPanda is a specialist food delivery platform to providing various authentic Chinese food and groceries to Chinese compatriots and students abroad, and SUNMI's IoT devices has helped us in improving our operational efficiency."

— HungryPanda



SUNMI Products Used
SUNMI V2, SUNMI V2 PRO

Value
The easy-to-use devices and receipt printing feature have improved the efficiency of the delivery service.

Applications
Online order taking, receipt printing, mobile checkout, etc.



The 24th Olympic Winter Games

"Together for a Shared Future" was revealed as the official motto of the Olympic and Paralympic Winter Games Beijing 2022.

"It is a important work to check the ID documents of atheletes and their teams, especially in an international big event like Winter Olympics. The smooth and responsive SUNMI handhelds help us a lot in completing the work quickly and conveniently."

—A staff member

SUNMI Product Used

SUNMI L2s

Applications

Identity verification, data collection.

Value

Better event management for the Beijing 2022 Winter Olympics.

AEON

A famous retail group in Japan and also one of the largest department stores in Asia.

"V2 PRO relieves our checkout pressure at peak hours when facing with long waiting lines. It runs smoothly even for a long time, which has drastically enhanced our work efficiency."

— A cashier, AEON Supermarket

SUNMI Product Used

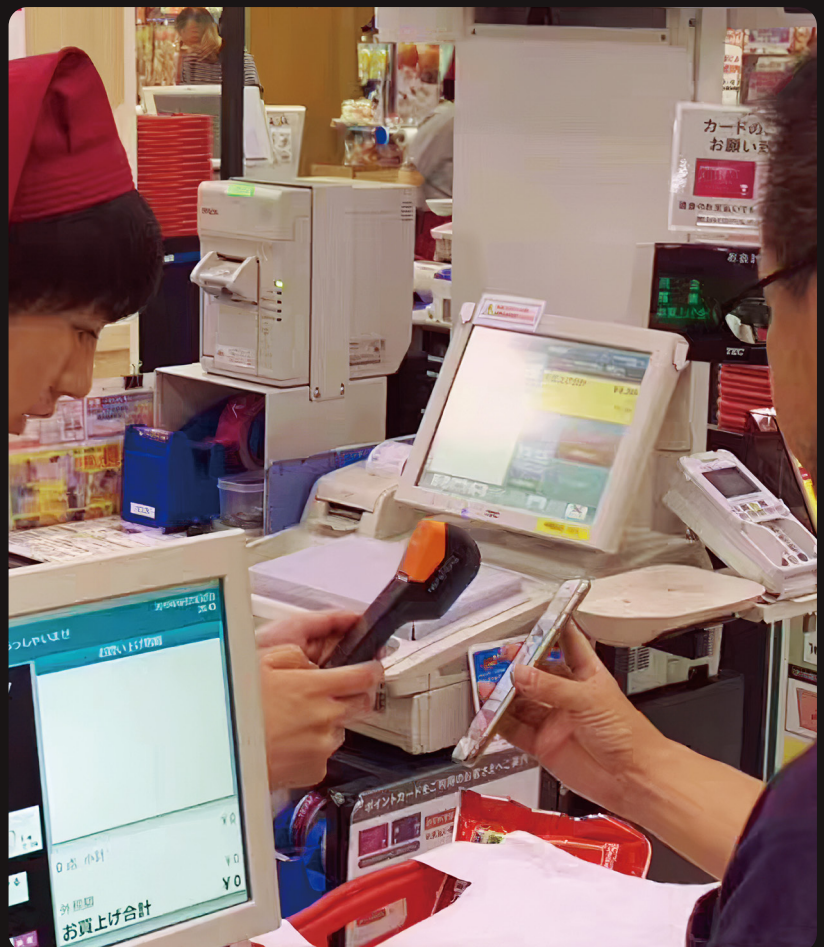
SUNMI V2 PRO

Applications

QR code payment, receipt printing.

Value

Quick device startup, quick barcode scanning and quick receipt printing.





OneCard: An popular OTA top-up software company in Saudi Arabia.

"SUNMI V series products are portable and easy to use. With a printer in the device, a receipt can be printed once a payment is completed, which has enhanced the efficiency of OTA top-up and drastically decreases the failure rate."

— A purchasing manager, OneCard

SUNMI Products Used

SUNMI V2

Applications

OTA top up, prepaid account refillment, etc.

Value

Swift receipt printing, mobile payment, etc.

Fun Bean's

A top convenience store chain in Jiangxi province, China.

"SUNMI tablet is easy to touch and use, and has a long run time. We can walk around in the store to check stock while filling orders on the replenishment system built inside. That is really a productivity driver. "

—A Fun Bean's Associate

SUNMI Product Used

SUNMI M2 MAX

Applications

Retail replenishment, information entry.

Value

Improved operational accuracy and overall efficiency.





FamilyMart: A Japanese-owned convenience store chain which operates over 24,000 stores worldwide, and also ranked top 100 chains in China, 2019.

“For cold-chain food, FamilyMart has strict rules on food safety control, it only takes 10min to check the items delivered, put away, defrost, unbag and prepare for sale, among which SUNMI V2 PRO is a great helper.”

— Manager, FamilyMart, Pusan, Shanghai

SUNMI Product Used

SUNMI V2 PRO

Applications

Receipt printing, item management.

Value

Streamlined cold-chain food security management and improved store operational efficiency.

ÁFIONA 妍丽

AFIONA: A China's well-known retail chain of imported cosmetics.

"Working with SUNMI, we constantly improve customer services. In addition to providing personalized skin-care solutions, we also are dedicated to creating user-centric shopping experience that is smarter, securer, more convenient and considerate."

—Tony,CEO of AFIONA

SUNMI Products Used

SUNMI FS, SUNMI ESL, SUNMI V2 PRO, SUNMI L Series

Applications

Origin tracking, surveillance and store monitoring, loss prevention, mobile checkout, inventory taking, etc.

Value

Visible operational data generated by IoT enabled smart stores.

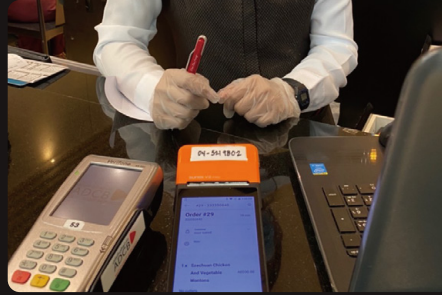
Software Solution



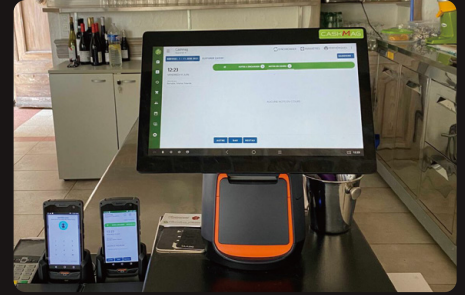
Empower offline businesses with co-developed digital solutions.



Loyalty program, promotion, item lookup and mobile checkout, SUNMI V2, Freshippo, China.



Ordering & checkout, SUNMI V2 PRO, a Dintaifung restaurant, Mall of Emirates Dubai.



Checkout and receipt printing, SUNMI L Series and T Series, Le Mas Des G6raniums, France.



Print lottery tickets and claim prizes with QR codes, SUNMI V2, Lotto 6/42, the Philippines.



PCR registration and test results tracking, SUNMI P2 and SUNMI V2 PRO, Ministry of Health, Mongolia.



QR code payment, SUNMI V2 PRO, a Uniqlo, Japan.



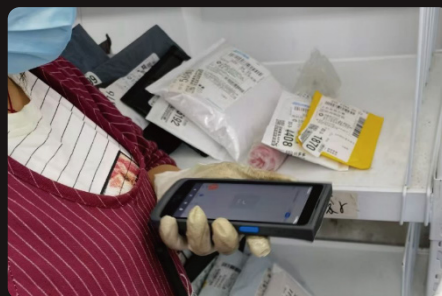
Seat/ticket lookup, identity verification, item stock management, ring up sales and take payments, SUNMI L2s, Kunming-Mohan section of the China-Laos Railway, China.



Ordering and checkout, SUNMI V2 PRO, SUNMI T Series, Fourth Market, Taichung City, Taiwan Province, China.



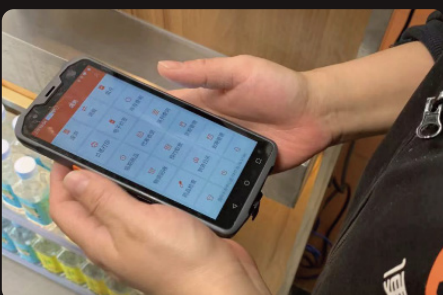
Mobile ticketing & ticket checking, SUNMI V2 PRO, Hong Kong-Zhuhai-Macao Bridge, China.



Parcel collection and sorting, OCR-based data capture, SUNMI Smart Mobile Terminals, Cainiao, China.



Mobile checkout, SUNMI V2, a Naeki Sushi restaurant, Thailand.



Sort items, take inventory and receive information from the HQ, SUNMI L2s, Bianlifeng, China.



E-ticketing for an easier travel experience, SUNMI V2 PRO, bus ticketing system, Bangladesh.



Mobile checkout, SUNMI V2 PRO, a fruit store, Thailand.

SUNMI

Smart Mobile Terminals

V Series



V2s PLUS

Smart Mobile Terminal



V2s

Smart Mobile Terminal



V2 PRO

Smart Mobile Terminal



V2

Smart Mobile Terminal

L Series



L2Ks

Smart Mobile Terminal



L2H

Smart Mobile Terminal



L2s PRO

Smart Mobile Terminal



L2s

Smart Mobile Terminal

M Series



M2 MAX

Smart Mobile Terminal



M2

Smart Mobile Terminal

Mobile

Terminals and Solutions



Payment

Terminals and Solutions



Desktop

Terminals and Solutions



Kiosk

Terminals and Solutions



Shanghai Sunmi Technology Co., Ltd.

F6, Building 7, No. 388 Songhu Rd, Shanghai, China.

Official Site: <https://www.sunmi.com/en-US/>

The information in this manual is subject to change without notice. We make a continual effort to improve our manuals in order to ensure they are as complete, accurate and helpful as possible.

Some data in this manual is from SUNMI Laboratory, the actual data shall take precedence in case of any discrepancy.

Images are taken in the real application scenarios, here for demonstration use only, the copyright belongs to SUNMI and our Partner(s). Please do not record or spread without the permission of the copyright owner(s).

©2023 Shanghai Sunmi Technology Co., Ltd. All rights reserved.